



# The State of London's Ponds

The Great London Pond Project

May 2025



## ACKNOWLEDGEMENTS

Work within The Great London Pond Project in 2024 was made possible with thanks to generous funding from the Mayor of London. The project in 2024/25 has been delivered by a partnership between ZSL, Freshwater Habitats Trust and Greenspace Information for Greater London (GiGL).



SUPPORTED BY  
**MAYOR OF LONDON**

We are also grateful to the Royal Parks and London boroughs for the provision of additional data and guidance.

**Contact:** Elizabeth Witcombe, Project Officer | [Elizabeth.Witcombe@zsl.org](mailto:Elizabeth.Witcombe@zsl.org)

**Authors:** Elizabeth Witcombe (ZSL), Joe Pecorelli (ZSL).



## TABLE OF CONTENTS

<b>Acknowledgements</b> .....	<b>2</b>
<b>Introduction</b> .....	<b>4</b>
<b>2024 pond survey</b> .....	<b>5</b>
GiGL dataset .....	5
Volunteer training and participation .....	5
Pond survey method.....	7
<b>Results</b> .....	<b>8</b>
Environmental data .....	8
Processed Points .....	8
Priority ponds .....	10
Incorporating data from other organisations.....	11
The condition of london’s ponds .....	12
Shaded.....	13
Turbidity .....	13
Dried out neglected ponds vs ephemeral ponds.....	14
Polluted ponds .....	15
<b>Wider implications</b> .....	<b>16</b>
estimation of the number of ponds in London .....	16
<b>Conclusions &amp; Next steps</b> .....	<b>17</b>
Conclusions.....	17
Next steps .....	17
<b>References</b> .....	<b>18</b>
<b>Appendices</b> .....	<b>20</b>
Appendix A .....	20
Appendix B .....	22
<b>Suggested citation</b> .....	<b>26</b>

## INTRODUCTION

The Freshwater Habitat's Trust describe a pond as being “a body of standing water between one square metre and two hectares in area that holds water for at least 4 months of the year” (Freshwater Habitats Trust, 2024a). Ponds vary widely as a habitat, which is part of what makes them such a vital habitat. Some ponds are ephemeral, filled with water only at certain times of the year. These habitats can be particularly important for some species of amphibian, which can prefer or in some cases rely on these habitats for breeding (Biggs and Williams 2024). Ponds also vary in depth, shape and the amount of shading and vegetation, all which can impact the animal and plant diversity that inhabit them. Ponds are extremely biodiverse and support a huge range of animal and plant groups including the seven species of amphibian found in the UK, around 2666 species of freshwater invertebrates, and 400 species of Britain's larger wetland plants (Williams et al. 2018). Although ponds themselves are not legally protected unless considered to be habitats of principal importance or within designated areas such as SSSIs, they provide essential habitat for UK protected species, most notably, great crested newts. A list of UK priority species that rely on ponds in London is shown in Appendix A.

Priority habitats were developed as a concept as part of the UK's commitment to the 1993 Convention on Biological Diversity. In 2007 some ponds became recognised as a priority habitat and the Natural Environment and Rural Communities (NERC) Act of 2006 is the basis of pond conservation. Although we refer to these habitats as priority ponds, legislatively the correct term is 'Habitat of Principal Importance'. Within this project we identify provisional priority ponds rather than actual priority ponds, but by identifying ponds that are most likely to be priority habitats under further investigation, we can direct where agencies, organisations and individuals should focus protections and enhancements of ponds (Freshwater Habitats Trust 2024b).

Despite the importance of ponds as a habitat, there has been no systematic survey of ponds completed across the entirety of Greater London since the 1980's (Langton 1985). To be able to protect and manage these habitats for wildlife, it is important to have a baseline knowledge of where and in what state ponds are currently in. The wider aim of The Great London Pond Project is to restore and increase the number of ponds across Greater London, with the first step of this having been to map and assess the condition of publicly accessible ponds with the help of community scientists. This data has been fed back to GiGL's Habitat and Land Use (HLU) dataset and considered within the London Nature Recovery Strategy as well as in the Freshwater Habitats wider Priority Pond mapping project.

The aims of this report are to:

- report our results from the 2024 Great London Pond Project survey,
- outline the general condition of ponds in London and
- outline the next steps needed to improve the number and condition of ponds in London



## 2024 POND SURVEY

### GIGL DATASET

As a starting point, ZSL received an extract from GiGL's Habitat and Land Use (HLU) dataset of standing waterbodies, which contained 2745 points where it was thought there could be publicly accessible ponds in London (Figure 1). The dataset was comprehensive, covering a range of timeframes and projects; however, some records were outdated, so one of the objectives was to ground truth the data to ensure its current accuracy.

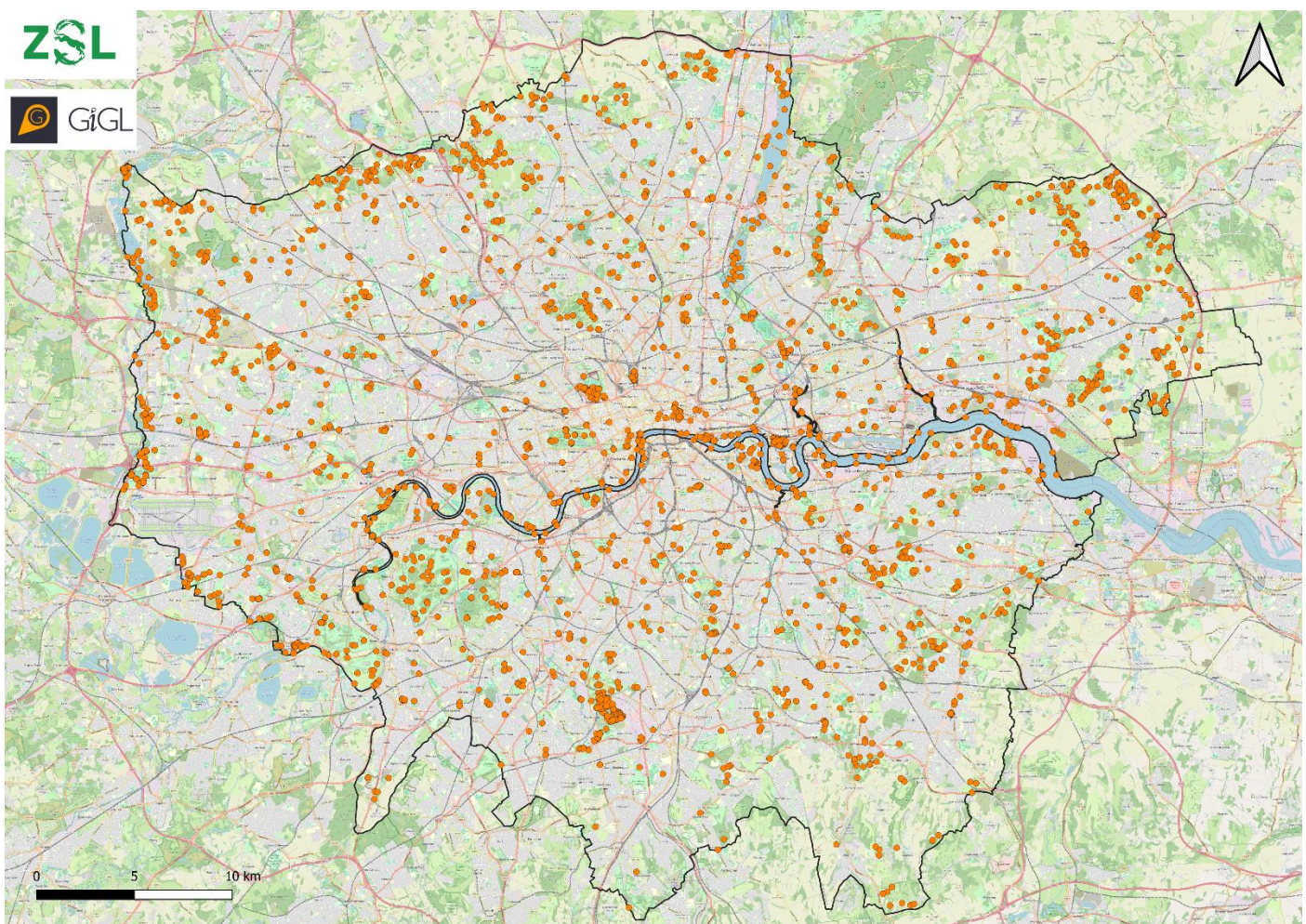


Figure 1. Extract from GiGL's HLU dataset of standing waterbodies.

### VOLUNTEER TRAINING AND PARTICIPATION

In May and June of 2024, 100 volunteers were trained across 6 in-person and 2 online training sessions (Figure 2). To create survey areas, London was divided into 1km grid squares (Figure 3), with volunteers able to sign up to as many grid squares as they wanted to survey. After the 8-training sessions were completed, 389 of these squares were assigned to volunteers. In total, 65 volunteers participated and completed surveys of 245 of the original 1km grid squares assigned. An additional 42 squares contained points that were processed that were outside of assigned survey squares. In addition, 82 grid squares were surveyed by ZSL staff over 9 survey days, leading to a total of 327 grid squares being surveyed in total by both volunteers and staff across the survey period.



Figure 2. Volunteer training events for The Great London Pond Project. Image credit: ZSL

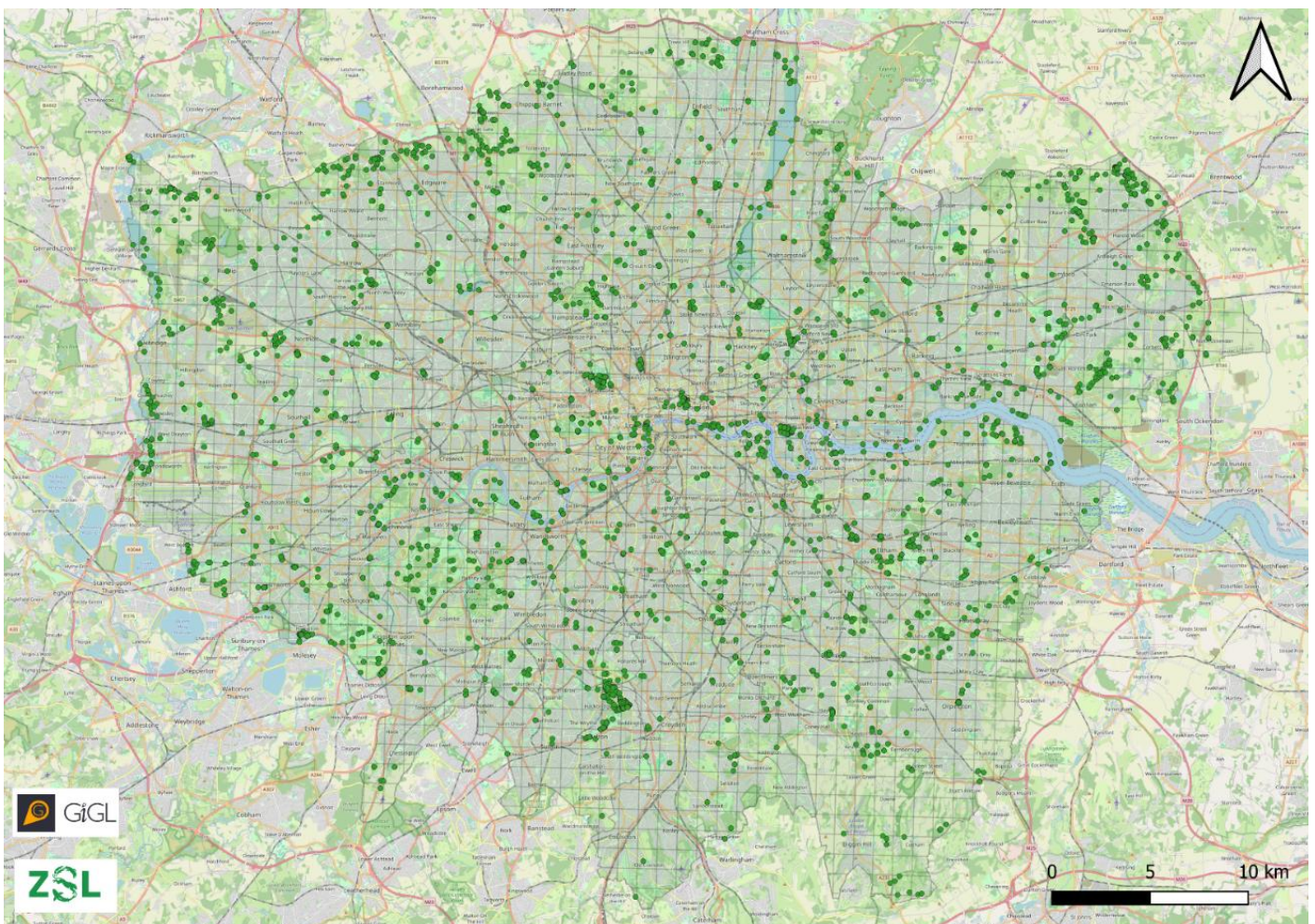


Figure 3. London split into 1km grid squares, and the extract from GiGL's HLU dataset of standing waterbodies provided by GiGL.



## POND SURVEY METHOD

Priority Ponds are waterbodies that have a particularly high conservation value: usually because they support important freshwater species or rare community types (Freshwater Habitats Trust 2024b). There are five ways to identify a priority pond, but these methods require expert knowledge, so the Freshwater Habitats Trust developed two additional methods for identifying provisional priority ponds. These include the Priority Pond Assessment (PASS) system and identification of clean water and are the two methods that we used in The Great London Pond Project. The PASS system is a volunteer friendly survey that uses observations about the physical characteristics of a pond to identify if a pond is likely to qualify as a priority pond or not, if its animal and plant diversity was investigated in more detail (Freshwater Habitats Trust 2024c). A negative result doesn't mean that the pond definitely doesn't have priority status, as the PASS method can miss up to 40% of priority ponds, it just means that further assessment is required to identify if it is a priority pond (Freshwater Habitats Trust n.d.). To measure clean water, ponds were tested with Kyoritsu PackTest low range phosphate and nitrate test kits, which are considered broadly reliable as a tool for identifying clean and polluted water (Biggs *et al.* 2016).

A survey form was made for volunteers on Epicollect5 that included the questions required to complete the PASS survey, such as surrounding land use within 0-5 metres, percentage plant cover and percentage of the pond overhung with trees and shrubs, plus some additional questions such as the amount of modified bank and a short wildlife survey. The full survey form can be viewed in Appendix B. Additional variables required for the PASS survey, which included surrounding land use within 0-100metres surrounding the pond and the isolation of the pond, were calculated afterwards using QGIS and a land use map from UKCEH (Morton *et al.* 2024).

## RESULTS

### ENVIRONMENTAL DATA

#### Processed Points

Out of the original 2745 data points originally supplied, 1173 were processed. Some points were processed using Google Satellite imagery to determine that they would either be inaccessible or not ponds. Of the 1173 points processed, 428 (36%) of the points were confirmed to be ponds, with other points revealed to be things such as swimming pools and fountains (Table 1). In addition, 150 'new' ponds were surveyed which were not included in the original GiGL dataset. A total of 578 ponds were surveyed during this project (Figure 4).

#### Map of all the data points processed and ponds mapped during The Great London Pond Project 2024 surveys

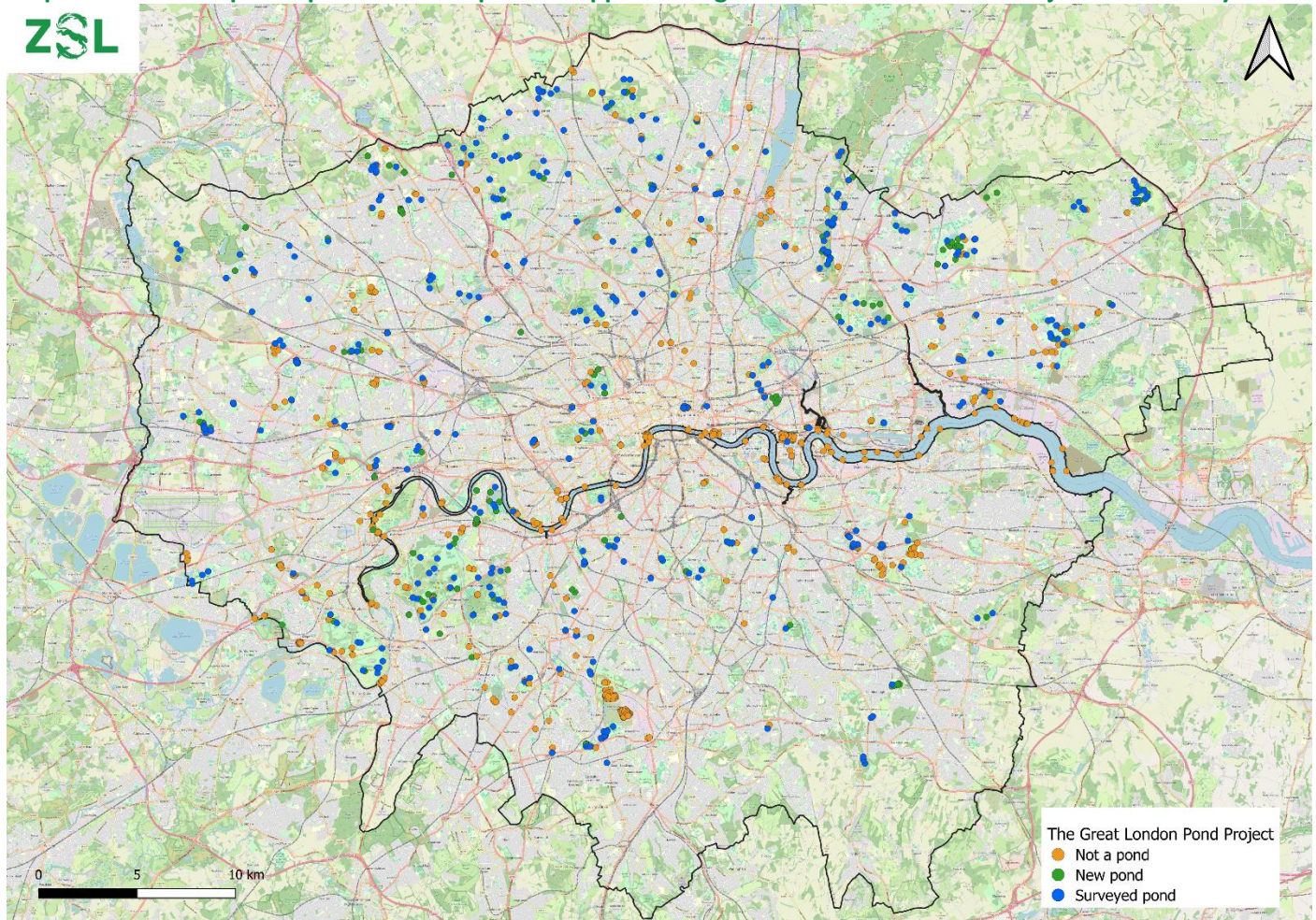


Figure 4. The points that were processed from standing waterbodies extracted from GiGL's HLU dataset and 'new' ponds that were mapped. Map made using QGIS.

**Table 1. Processed data point categories**

DATA POINTS	NUMBER
Allotment ponds (not included)	6
Docks and locks	74
Drainage ditches	7
Duplicate points	75
Garden ponds (not included)	1
Fountains	34
New ponds not on original dataset	150
No access (golf courses, schools, other private land etc.)	209
No Pond (other)	60
Playground	2
Sewage/water works	163
Stream/River/Canal	97
Surveyed but too large to fit the definition of a pond (>1m <sup>2</sup> and <2 hectares)	5
Swimming pool/Lido/Splash pad	19
Surveyed Ponds	428

Of the ponds surveyed, 167 ponds were sampled for phosphate (PO<sub>4</sub><sup>3-</sup>) and nitrate (NO<sub>3</sub><sup>-</sup>). Of these, 151 ponds were tested using Kyoritsu PackTest rapid phosphate and nitrate test kits, with 16 ponds being tested by Royal Parks using API 500 Pond Master Test Kit for Pond Water tests. The results of those tested using Kyoritsu test kits are shown in Figure 2. Of the ponds tested, 82% had no evidence of nitrate pollution and 47% had no evidence of phosphate pollution (Figure 6).

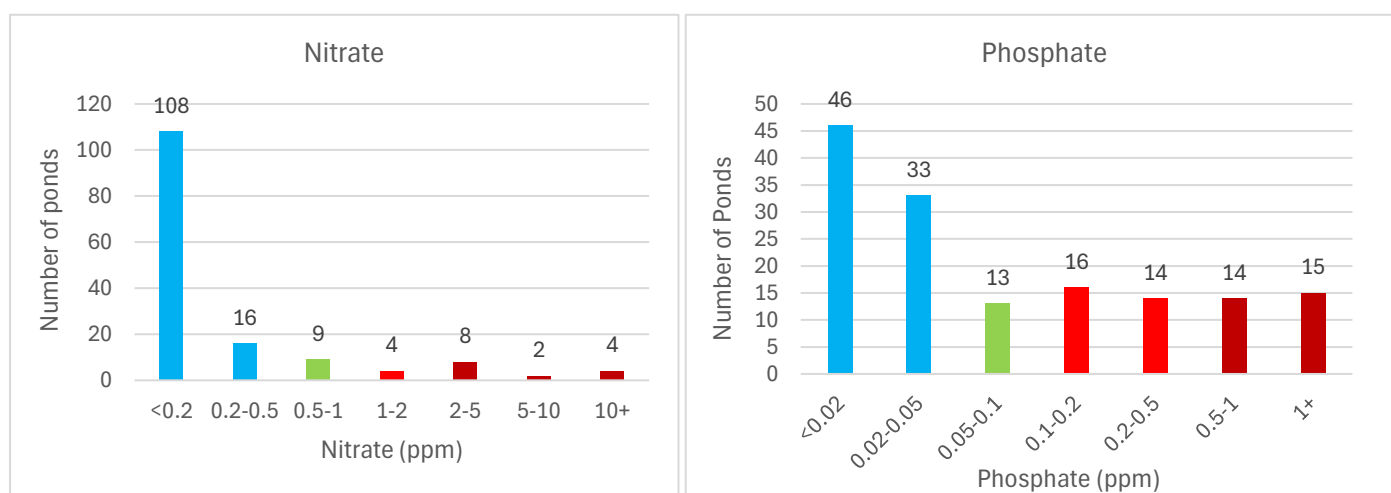


Figure 6. Nitrate and Phosphate levels of surveyed ponds. Colours relate to how the result can be interpreted via the chart in Figure 7.

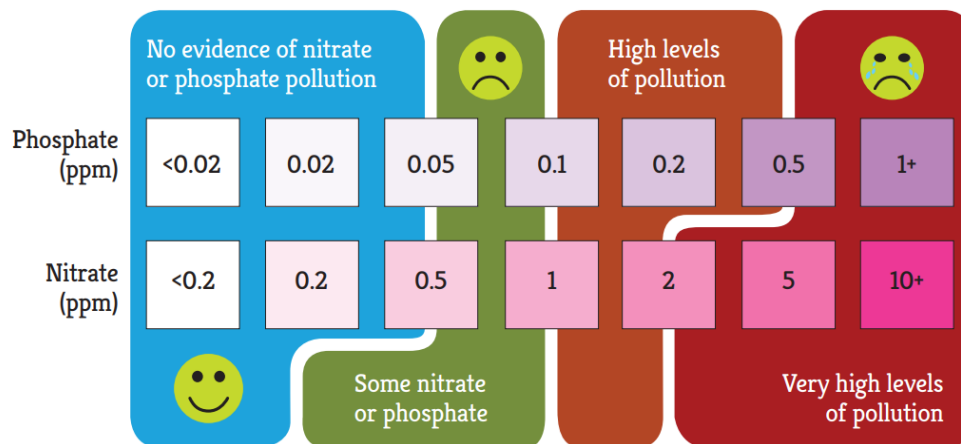


Figure 7. How to interpret water quality results from Kyoritsu tests. Taken from Freshwater Habitats Trust (2024d).

### Priority ponds

#### PASS

To determine how many ponds qualified as provisional priority ponds under the PASS method, surveyed ponds were entered through the Freshwater Habitats Trust PASS calculator. Results were returned for 518 ponds, of which 48 of these qualified as provisional priority ponds (9%).

#### Water Quality

For a pond to qualify as a provisional priority pond under clean water, both nitrate and phosphate need to be at low levels, with nitrate levels below 0.5 ppm and phosphate below 0.05 ppm. Based on this, 69 of the ponds that were tested qualified as provisional priority ponds under the clean water method, 41% of the ponds that had water quality tests done.

#### Overall

Overall, 102 individual ponds were identified as provisional priority ponds, either through the PASS method or through water quality testing, with 14 of these ponds qualifying under both (Figure 8). The national expectation is that 20% of ponds will be priority ponds and within this project, this figure approximately fit that trend, with just under 20% of ponds qualifying as provisional priority ponds, either through water quality or PASS.

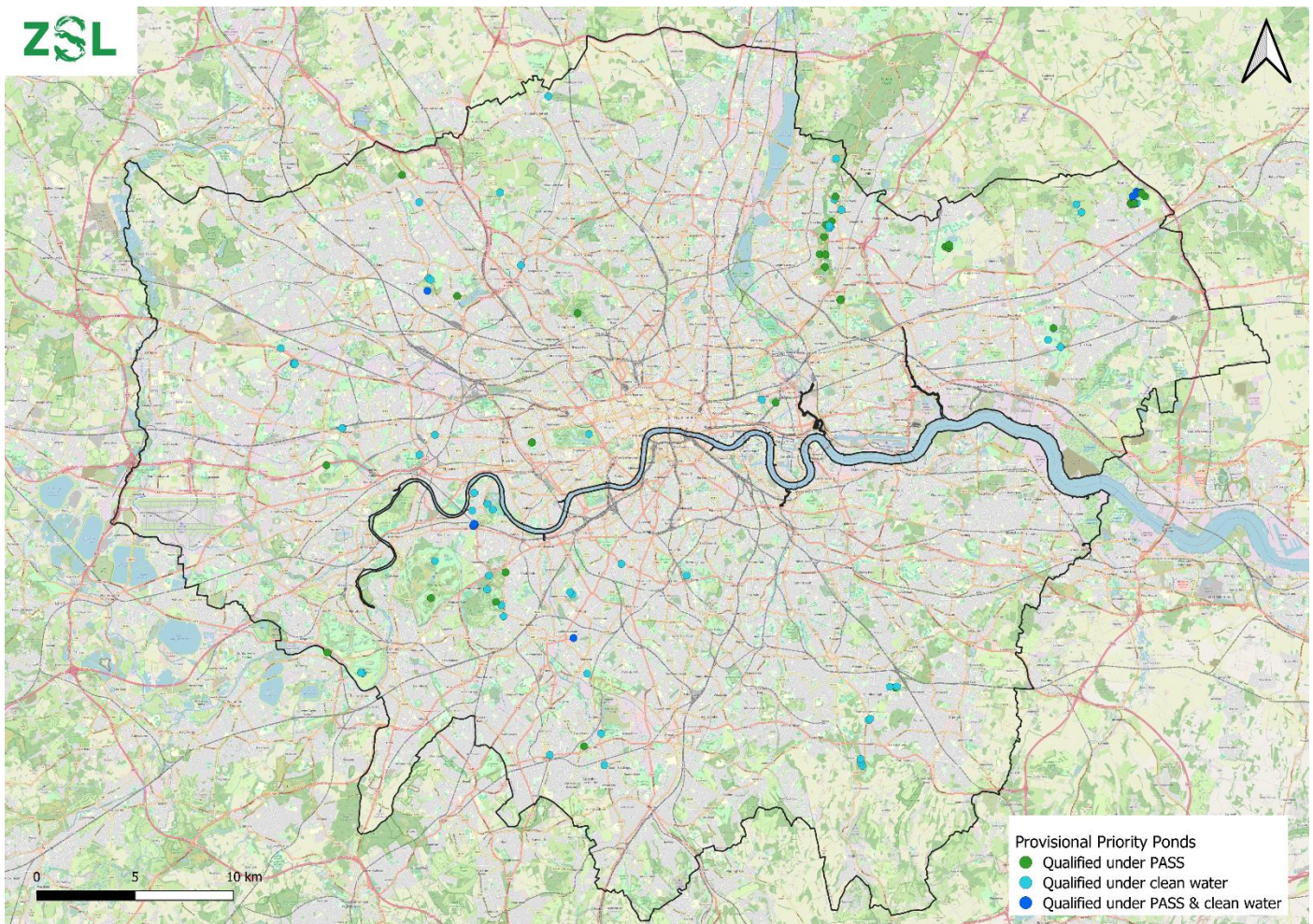


Figure 8. Map of ponds that qualified as Provisional Priority Ponds under the PASS method or under clean water.

## INCORPORATING DATA FROM OTHER ORGANISATIONS

After an initial call out to LBBF, the following boroughs provided extra data of publicly accessible ponds within their boroughs (Figure 9). Royal parks also provided data on the ponds within their parks, both publicly accessible and not publicly accessible.

- Croydon
- Hammersmith and Fulham
- Islington
- Richmond
- Southwark
- Sutton
- Wandsworth

### Pond location data provided by other organisations

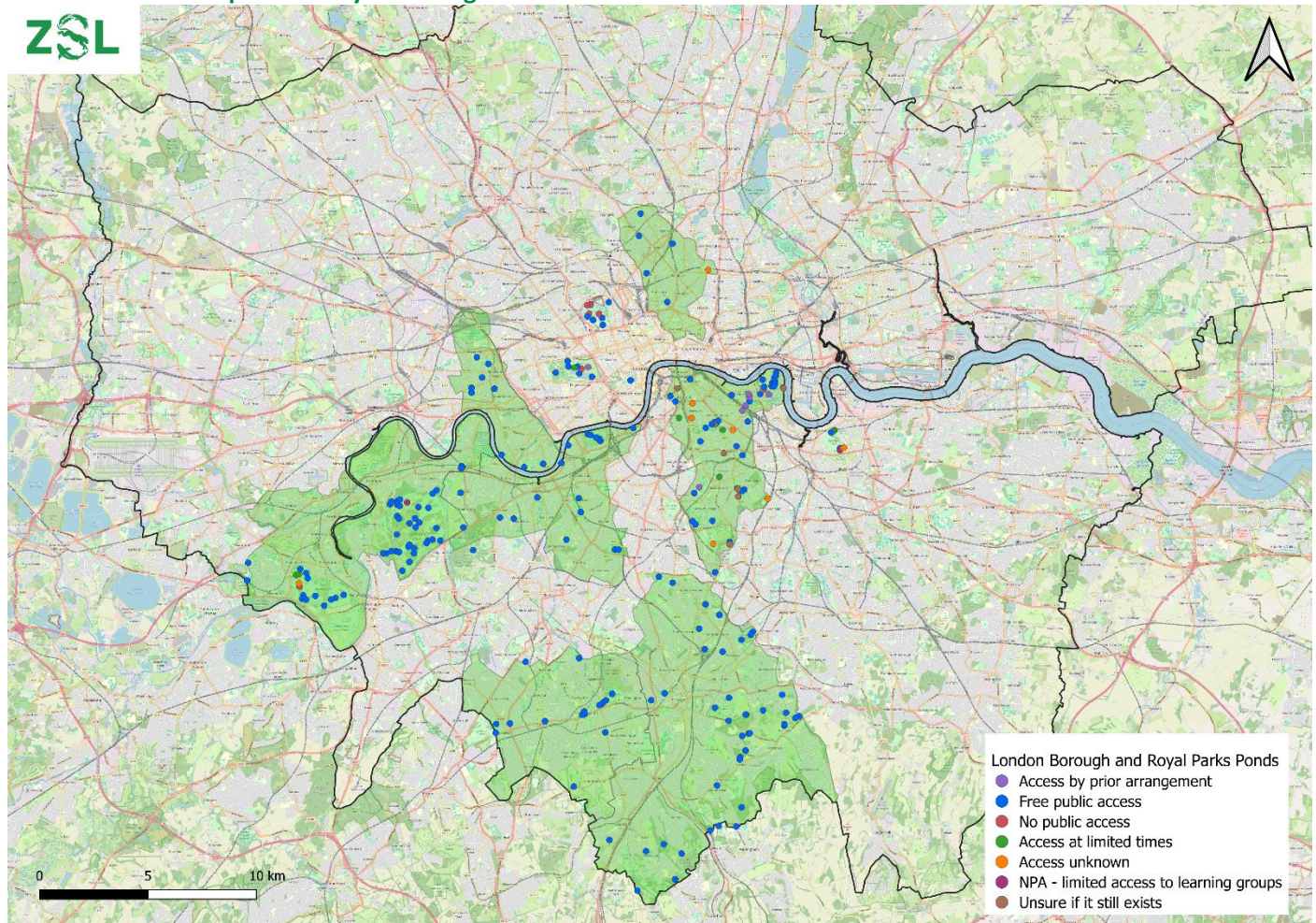


Figure 9. Data provided by Royal Parks and the London Boroughs of Croydon, Hammersmith and Fulham, Islington, Richmond, Southwark, Sutton and Wandsworth. Where coordinates not provided – centre of park with the pond in has been mapped or where can be approximated from looking at google maps satellite view. Map made using QGIS.

## THE CONDITION OF LONDON’S PONDS

To assess the condition of ponds in London and understand how many ponds are in a neglected state we assessed several factors including how shaded the pond was, whether it was entirely dried out, and if it was turbid or polluted. Table 3 indicates how many ponds were impacted by at least one of the indicating factors of a potentially neglected pond. However, it is important to note that this was only a snapshot survey as ponds were only surveyed and photographed in a single point of time, therefore there may be some ponds that are incorrectly classed as neglected despite being managed.

**Table 1. The number of ponds in the categories relevant for identifying neglected ponds**

CATEGORY	NUMBER OF PONDS
100% shaded	32 (5.5%)
≥80% shaded	93 (16%)
Turbid	150 (26%)
Poor water quality (N = ≥0.5-1)	28 (17%)
Poor water quality (P = ≥0.05-0.1)	90 (54%)
No water present at time of survey	79 (14%)

### Shaded

Completely shaded ponds are not always a bad thing – in fact it is good for wildlife to have a mixture of pond types within the landscape, varying from shaded, to completely open, deep to shallow, permanent to seasonal etc. Few wetland plants can tolerate complete shade, but in dappled shade a surprising number can grow well (Biggs and Williams 2024). In studies investigating the relationship between shade and plant biodiversity, shade levels from 0-80% were shown to have relatively little impact on diversity, but only in unpolluted, minimally impaired ponds (Biggs and Williams 2024). In polluted ponds, the relationship between shade and biodiversity is more complicated due to the difficulties in differentiating between pollution and shading as reasons for poor quality in analysis of ponds that have both (Biggs and Williams 2024).

Changes in land management over the years has meant that there is a greater proportion of ponds that are being encroached by scrub and trees (Sayer *et al.* 2023). Although shaded ponds can support specialist species and it is important to investigate the pond before making any changes, if too many ponds are in this state, it can be important to restore some of these ponds through scrub and sediment removal (Sayer *et al.* 2023). A study by Hill *et al.* (2017) found that urban ponds were significantly more shaded than non-urban ponds, which they considered likely to be due to urban density of buildings providing additional shading to that of trees.

In our 2024 survey, 5.5% of ponds were 100% shaded and 16% were ≥80% shaded.

### Turbidity

Turbidity is a measure of relative water clarity. Turbidity can result from suspended solids within the water such as silt, inorganic materials, organic matter such as algae and decaying material or dissolved organic matter from decaying plants and leaves (Natural Resources Wales n.d.). Suspended solids within waterbodies are well documented as leading to ecological degradation in aquatic environments (Bilotta and Brazier 2008; Wood and Armitage 1997). Suspended solids can lead to poorer light transmission, changed temperatures and can lead to depleted oxygen levels as well as releasing chemicals such as heavy metals into the water, all of which can impact aquatic organisms in various different ways. For example, for invertebrates it can cause abrasion, which can lead to damaged respiratory organs, or for filter feeding organisms it can cause reduced feeding efficiency through clogging feeding structures (Bilotta and Brazier 2008).

As taken from the Freshwater Habitats Trust pond habitat survey recording form, the turbidity of ponds within The Great London Pond Project were measured by volunteers looking down into the water at an approximate depth of 20cm and recording the turbidity as either clear (you can clearly see the bottom of the pond when looking at a depth of 20cm), moderate (water is not completely clear but the bottom is not completely obscured when looking at a depth of 20cm) or turbid (the bottom of the pond is completely obscured when looking at a depth of 20cm and the water is very murky).

Of the surveyed ponds, 150 (26%) were classed as turbid, 190 (33%) were moderate and 169 (29%) were clear. 28 ponds that were  $\geq 80\%$  shaded were also classed as turbid.

### Dried out neglected ponds vs ephemeral ponds

Ponds that were identified as holding no little/water at the time of being surveyed were split into two categories of ephemeral and as neglected ponds. In these areas there were dips in the ground, gaps in the vegetation and/or damp ground, indicating that there might be water held there at points throughout the year or that there may have been a pond present in the past.

These ponds were classed as ephemeral if there was evidence of wetland vegetation such as reeds or if there was a small amount of water in the base, or if a volunteer had specifically identified a pond as ephemeral based on local knowledge. Ponds were classed as completely neglected if there was no wetland vegetation identified during the surveys, no water was present and if they had not been identified as ephemeral by the volunteer's local knowledge (Figure 10).

In our survey, 79 ponds had had no water at the time of surveying, with 25 ponds completely dried with no pond plants present and 50 ponds that held no water during surveys were identified as ephemeral, either because they had been identified as ephemeral by volunteers' local knowledge or because pond plants/reeds were identified during the survey. 7 ponds were so overgrown that volunteers could not see if there was water present.

33 ponds that were  $\geq 80\%$  shaded also had no water at the time of survey.



Figure 10. A pond classed as an ephemeral pond with reeds present (Left) vs a potentially neglected pond (right).



### **Polluted ponds**

Out of the 167 ponds surveyed, 28 (17%) had a nitrate score of  $\geq 0.5$ ppm and 90 (54%) ponds had a phosphate score of  $\geq 0.05$ ppm and were therefore classed as being polluted to some extent (Figure 7). 18 (11%) of ponds had both a nitrate score  $\geq 0.5$ ppm and a phosphate score  $\geq 0.05$ ppm.

## WIDER IMPLICATIONS

### ESTIMATION OF THE NUMBER OF PONDS IN LONDON

Out of the original 2745 data points of standing waterbodies provided, 43% of points were processed. The points that were processed were based on where the participants wanted to survey, most commonly because it was near to where they lived. Mostly, there was an even coverage of processed points, but with most gaps in sampling occurring in south-east London (Figure 4).

Some points were processed from satellite imagery where we could confirm they were not ponds or were inaccessible, from the map (i.e. points that were in the Thames/docks and sewage works). Upon removing these, the percentage of points that were ponds increased to approximately 53%. If we take this as representative of the original dataset, we could estimate that approximately 53% of the original 2745 data points are ponds, which would work out as approximately 1370 publicly accessible ponds across London.

Of the points identified as ponds, approximately 20% were identified to be provisional priority ponds, either through water quality results or through the PASS survey. If we assume this is representative of the original dataset from GiGL, it could be estimated that there are approximately 270 provisional priority ponds in London.

It is worth noting that the Freshwater Habitats Trust PASS assessment was developed in a rural context therefore it is not entirely known if this is the best way to measure the importance of ponds in an urban context. In addition, the PASS survey is thought to pick up approximately 60% of priority ponds, meaning that the actual number of priority ponds in London may be higher if more detailed assessments were completed. There is also room for volunteer error and subjectivity when sampling as the survey requires making estimates of plant coverage and shading which can be difficult to standardise when lots of volunteers are completing the surveys.

## CONCLUSIONS & NEXT STEPS

### CONCLUSIONS

Overall, this review of London ponds has highlighted that there are still many ponds across Greater London that are providing vital habitats for wildlife. However, the 2024 pond surveys have also shown that many of the ponds in Greater London that were thought to exist have either been lost from our cityscape, or are in a state of disrepair. This provides an opportunity to look towards what we could do to improve pond habitats in London and work towards increasing and restoring these vital habitats.

### NEXT STEPS

ZSL's vision is Greater London rich in well maintained and monitored ponds that provide vital habitat for plants and animals. This will require the restoration of old ponds and the creation of new ponds. We recognised this vision is shared by many organisations – see for instance the work to create 100 new ponds led by London Borough of Enfield in Enfield Chase and Froglife's Blue Chain project in the boroughs of Bexley, Greenwich, Bromley, Lewisham, Southwark and Lambeth.

The next steps towards this vision are to:

- Support the development of a pond working group for London that will be open to fellow NGOs, academics and other experts. The working group will guide the work needed to achieve the vision.
- Build an understanding of the best locations for new ponds for example by identifying where clean water sites might be found.
- Forge new partnerships with landowners and community groups to restore and create ponds.
- Support community based London pond champions who will work with us to monitor, restore and maintain ponds.
- Collaboratively develop, or adapt from existing, the most suitable community science methods for monitoring ponds and make them freely available.

## REFERENCES

- Biggs, J., McGoff, E., Ewald, N., Williams, P., Dunn, F. and Nicolet, P. 2016. Clean Water for Wildlife technical manual. Evaluating PackTest nitrate and phosphate test kits to find clean water and assess the extent of pollution. Freshwater Habitats Trust, Oxford.
- Biggs, J., Williams, P. (2024). *Ponds Pools and Puddles*. London: William Collins.
- Bilotta, G., Brazier, R. (2008). Understanding the influence of suspended solids on water quality and aquatic biota. *Water Research* 42(12):2849-2861. Available at: <https://doi.org/10.1016/j.watres.2008.03.018> [Accessed: 24<sup>th</sup> March 2025].
- Freshwater Habitats Trust (2023). *What makes a good wildlife pond?* Available at: <https://freshwaterhabitats.b-cdn.net/app/uploads/2023/07/What-makes-a-good-wildlife-pond-NEW.pdf> [Accessed: 19<sup>th</sup> February 2025].
- Freshwater Habitats Trust (2024a). *Ponds*. Available at: <https://freshwaterhabitats.org.uk/habitats/ponds/#:~:text=Ponds%20are%20bodies%20of%20water,of%20the%20year%20or%20more>. [Accessed: 1<sup>st</sup> November 2024].
- Freshwater Habitats Trust (2024b). *Priority Ponds*. Available at: <https://freshwaterhabitats.org.uk/our-work/conservation-and-practical-delivery/habitat-protection/priority-ponds/#:~:text=Priority%20ponds%20are%20waterbodies%20that,metre%20to%20two%20hectares>. [Accessed 1<sup>st</sup> November 2024].
- Freshwater Habitats Trust (2024c). *Identify and record a priority pond*. Available at: <https://freshwaterhabitats.org.uk/advice-resources/survey-methods-hub/identify-a-priority-pond/> [Accessed: 1<sup>st</sup> November 2024].
- Freshwater Habitats Trust (2024d). *Clean Water for Wildlife*. Available at: <https://freshwaterhabitats.org.uk/advice-resources/survey-methods-hub/clean-water-for-wildlife/> [Accessed: 18<sup>th</sup> October 2024].
- Freshwater Habitats Trust (2024e). *Clean Water for Wildlife*. Available at: <https://freshwaterhabitats.org.uk/advice-resources/survey-methods-hub/clean-water-for-wildlife/> [Accessed: 8<sup>th</sup> November 2024].
- Freshwater Habitats Trust (No Date). Priority Pond Assessment Survey (PASS) Guide. Available at: <https://freshwaterhabitats.b-cdn.net/app/uploads/2024/07/PASS-Method-Guide.pdf> [Accessed: 31<sup>st</sup> March 2025].
- GiGL. (2024). *Species Lists*. Available at: [https://www.gigl.org.uk/our-data-holdings/species-data/species-lists/?fbclid=IwY2xjawIGJg1leHRuA2FlbQlxMAABHSqghMO88G6yPglKxqKCrv7k9OBcBlcTi32RUqCrJxnzF5SB0454A\\_XUgw\\_aem\\_rw343yBGA\\_N4\\_COxEiFxew](https://www.gigl.org.uk/our-data-holdings/species-data/species-lists/?fbclid=IwY2xjawIGJg1leHRuA2FlbQlxMAABHSqghMO88G6yPglKxqKCrv7k9OBcBlcTi32RUqCrJxnzF5SB0454A_XUgw_aem_rw343yBGA_N4_COxEiFxew) [Accessed: 4<sup>th</sup> April 2025].
- Hill, M., Biggs, J., Thornhill, I., Briers, R., Gledhill, D., White, J., Wood, P., Hassall, C. (2017). Urban ponds as an aquatic biodiversity resource in modified landscapes. *Global Change Biology* 23(3):986-999. Available at: <https://doi.org/10.1111/gcb.13401> [Accessed: 8<sup>th</sup> April 2025].

Langton, T. (1985). The London Pond Survey. *Oryx* 19(3): 163-166. Available at: <https://www.cambridge.org/core/journals/oryx/article/london-pond-survey/7D23534C0FB773205E8A4D9CEF84A216> [Accessed: 31<sup>st</sup> March 2025].

Morton, R. D., Marston, C. G., O'Neil, A. W., & Rowland, C. S. (2024). Land Cover Map 2023 (10m classified pixels, GB) [Data set]. NERC EDS Environmental Information Data Centre. <https://doi.org/10.5285/7727ce7d-531e-4d77-b756-5cc59ff016bd>

Natural Resources Wales n.d. *Turbidity of Water Information Note*. Available at: <https://cdn.cyfoethnaturiol.cymru/694218/information-note-turbidity.pdf> [Accessed: 24<sup>th</sup> March 2025].

Sayer, C.D., Biggs, J., Greaves, H.M., & Williams, P. (2023) Guide to the restoration, creation and management of ponds. University College London, London, UK.

Williams, P., Biggs, J., Whitfield, M., Thorne, A., Bryant, S., Fox, G., Nicolet, P. (2018). *The Pond Book: A guide to the management and creation of ponds*. 3<sup>rd</sup> edition. Oxford: Freshwater Habitats Trust.

Wood, P., Armitage, P. (1997). Biological Effects of Fine Sediment in the Lotic Environment. *Environmental Management* 21(2):203-217. Available at: <https://doi.org/10.1007/s002679900019> [Accessed: 24<sup>th</sup> March 2025].

## APPENDICES

### Appendix A

**Table 2. The London's LNRS Priority Species Longlist, filtered to only include species with primary habitat categories of wetland, fen marsh and swamp standing water, reedbeds, standing water, standing open water and canals, Grazing marsh / Ponds & lakes > emergent/aquatic vegetation, ponds and small streams and standing water reedbeds (GiGL 2024).**

TAXON GROUP	TAXON NAME	COMMON NAME	LNRS CATEGORY	PRIMARY HABITAT
Amphibian	<i>Bufo bufo</i>	Common toad	D: Needs bespoke conservation action/s	Wetland
Amphibian	<i>Triturus cristatus</i>	Great crested newt	B: Needs targeted habitat management	Wetland
Birds	<i>Charadrius dubius</i>	Little Ringed Plover	B: Needs targeted habitat management	Fen, marsh and swamp; Standing water
Birds	<i>Emberiza schoeniclus</i>	Reed Bunting	D: Needs bespoke conservation action/s	Reedbeds
Birds	<i>Locustella naevia</i>	Grasshopper Warbler	B: Needs targeted habitat management	Reedbeds
Birds	<i>Panurus biarmicus</i>	Bearded Tit	D: Needs bespoke conservation action/s	Reedbeds
Birds	<i>Sterna hirundo</i>	Common Tern	D: Needs bespoke conservation action/s	Standing Water
Birds	<i>Sylvia curruca</i>	Lesser Whitethroat	B: Needs targeted habitat management	Reedbeds
Flowering plants	<i>Carex rostrata</i>		B: Needs targeted habitat management	Standing open water and canals
Flowering plants	<i>Carex vesicaria</i>		B: Needs targeted habitat management	Standing open water and canals
Flowering plants	<i>Catabrosa aquatica</i>		B: Needs targeted habitat management	Standing open water and canals
Stonewort	<i>Chara contraria</i>		C: Needs improvements in environmental quality	Standing open water and canals
Stonewort	<i>Chara globularis</i>		C: Needs improvements in environmental quality	Standing open water and canals
Stonewort	<i>Chara virgata</i>		C: Needs improvements in environmental quality	Standing open water and canals
Flowering plants	<i>Groenlandia densa</i>		C: Needs improvements in environmental quality	Standing open water and canals
Flowering plants	<i>Hottonia palustris</i>		C: Needs improvements in environmental quality	Standing open water and canals
Flowering plants	<i>Hydrocharis morsus-ranae</i>		B: Needs targeted habitat management	Standing open water and canals
Flowering plants	<i>Limosella aquatica</i>		C: Needs improvements in environmental quality	Standing open water and canals
Flowering plants	<i>Myosotis secunda</i>		B: Needs targeted habitat management	Standing open water and canals
Flowering plants	<i>Myriophyllum alterniflorum</i>		C: Needs improvements in environmental quality	Standing open water and canals

<b>Flowering plants</b>	<i>Myriophyllum verticillatum</i>		C: Needs improvements in environmental quality	Standing open water and canals
<b>Stonewort</b>	<i>Nitella flexilis</i>		C: Needs improvements in environmental quality	Standing open water and canals
<b>Stonewort</b>	<i>Nitella mucronata</i>		C: Needs improvements in environmental quality	Standing open water and canals
<b>Stonewort</b>	<i>Nitella opaca</i>		C: Needs improvements in environmental quality	Standing open water and canals
<b>Flowering plants</b>	<i>Nymphoides peltata</i>		B: Needs targeted habitat management	Standing open water and canals
<b>Flowering plants</b>	<i>Potamogeton friesii</i>		C: Needs improvements in environmental quality	Standing open water and canals
<b>Flowering plants</b>	<i>Potamogeton lucens</i>		C: Needs improvements in environmental quality	Standing open water and canals
<b>Flowering plants</b>	<i>Potamogeton obtusifolius</i>		C: Needs improvements in environmental quality	Standing open water and canals
<b>Flowering plants</b>	<i>Potamogeton perfoliatus</i>		C: Needs improvements in environmental quality	Standing open water and canals
<b>Flowering plants</b>	<i>Rorippa × erythrocaulis</i>		B: Needs targeted habitat management	Standing open water and canals
<b>Flowering plants</b>	<i>Sparganium erectum subsp. microcarpum</i>		C: Needs improvements in environmental quality	Standing open water and canals
<b>Stonewort</b>	<i>Tolypella glomerata</i>		C: Needs improvements in environmental quality	Standing open water and canals
<b>Flowering plants</b>	<i>Utricularia australis</i>		C: Needs improvements in environmental quality	Standing open water and canals
<b>Flowering plants</b>	<i>Utricularia vulgaris</i>		C: Needs improvements in environmental quality	Standing open water and canals
<b>Invertebrates - Beetles</b>	<i>Hydrochus ignicollis</i>	Hydrochus ignicollis	B: Needs targeted habitat management	Grazing marsh / Ponds & lakes > emergent/aquatic vegetation
<b>Invertebrates - Beetles</b>	<i>Hydrophilus piceus</i>	Great Silver Water Beetle	B: Needs targeted habitat management	Grazing marsh / Ponds & lakes > emergent/aquatic vegetation
<b>Invertebrates - Beetles</b>	<i>Limnoxenus niger</i>	Limnoxenus niger	B: Needs targeted habitat management	Grazing marsh / Ponds & lakes > emergent/aquatic vegetation
<b>Invertebrates - Dragonfly &amp; damselfly</b>	<i>Lestes dryas</i>	Scarce emerald	B: Needs targeted habitat management	Standing water
<b>Invertebrates - Dragonfly &amp; damselfly</b>	<i>Somatochlora metallica</i>	Brilliant emerald	B: Needs targeted habitat management	Standing Water
<b>Invertebrates - Mayflies</b>	<i>Arthroplea congener</i>	a Mayfly	D: Needs bespoke conservation action/s	Ponds and small streams
<b>Invertebrates - Mayflies</b>	<i>Arthroplea congener</i>	a Mayfly	D: Needs bespoke conservation action/s	Ponds and small streams
<b>Invertebrates - Moths</b>	<i>Archanara dissoluta</i>			Reedbeds

Invertebrates - Moths	<i>Calaena leucostigma</i>		Reedbeds
Invertebrates - Moths	<i>Chilo phragmitellus</i>		Reedbeds
Invertebrates - Moths	<i>Donacaula forcicella</i>		Reedbeds
Invertebrates - Moths	<i>Donacaula mucronella</i>		Reedbeds
Invertebrates - Moths	<i>Macrochilo cribrumalis</i>		Reedbeds
Invertebrates - Moths	<i>Schoenobius gigantellus</i>		Reedbeds
Mammals - Terrestrial	<i>Arvicola amphibius</i>	European Water Vole	Standing water
Mammals - Terrestrial	<i>Lutra lutra</i>	European Otter	Standing Water
Mammals - Terrestrial	<i>Micromys minutus</i>	Harvest Mouse	Standing Water; Reedbeds

## Appendix B

Table 3. Survey questions (\*questions required for the Freshwater Habitats PASS survey)

SURVEY QUESTION	MULTIPLE CHOICE ANSWERS
<b>Surveyor Name</b>	
<b>Date of survey</b>	
<b>If the pond has a name, please record it here</b>	
<b>Location</b>	
<b>Is the pond present on the map provided</b>	<ul style="list-style-type: none"> <li>• A pond is shown on the map and there is a pond on the ground</li> <li>• A pond is shown on the map but there is not a pond present on the ground</li> <li>• There is a pond on the ground, but it is not shown on the map</li> </ul>
<b>What is the reference number of the pond on the provided map</b>	
<b>Photo</b>	
<b>What is the size of the pond</b>	<ul style="list-style-type: none"> <li>• 1 - 25 square metres</li> <li>• 25 - 400 square metres</li> <li>• 400 - 2000 square metres</li> <li>• 2000 square metres - 1ha</li> <li>• 1ha - 2ha</li> </ul>
<b>Turbidity/water clarity. Estimate turbidity looking down into c.20cm depth of water in the pond</b>	<ul style="list-style-type: none"> <li>• Clear (you can clearly see the bottom of the pond when looking at a depth of 20cm)</li> </ul>

- Moderate (water is not completely clear but the bottom is not completely obscured when looking at a depth of 20cm)
- Turbid (the bottom of the pond is completely obscured when looking at a depth of 20cm, water very murky)

**Percentage of pond overhung by trees and shrubs (i.e. that would be shaded if the sun was overhead)\***

**Percentage plant cover (including submerged plants, emergent plants and floating leaved plants, but excluding algae, duckweed and water fern)\***

**Inflows and outflows\***

- Inflow(s) present
- Outflow(s) present
- Both inflow(s) and outflow(s) present
- No inflows or outflows visible

**Is there evidence of grazing? (Excluding rabbits, ducks, geese or other disturbance by people or dogs)\***

**Grazing extent?\***

- 1 - Infrequent or low intensity grazing. Ponds that can be accessed by animals, but surrounding grassland is tall and shows few signs
- 2 - Clear evidence of grazing on the ponds and bank margins but not sufficient to create extensive areas of bare ground
- 3 - Ponds that have short-grazed vegetation on the pond banks and/or significant evidence of hoof poaching with 0% to 20% of the margins exposed
- 4 - Pond banks and margins heavily grazed and poached so that between 20% and 90% of the pond banks and margins are bare poached mud
- 5 - Pond margins so heavily trampled and grazed that they are almost bare of vegetation (i.e. pond margins are at least 90% mud).

**What are the surrounding land use types within 0-5 metres of the pond?**

- Improved grassland (often bright green and lush; including parks and golf greens.)
- Natural or semi-natural grassland (all grassland types excluding improved grassland - parks/golf courses)
- Urban buildings and gardens
- Ponds and lakes (Permanent and seasonal waterbodies)
- Roads, tracks and paths (Including car-parks and footpaths)
- Rock, stone and gravel (Gravel-pits, quarries, areas of sand and gravel or stone)
- Trees, woodland and scrub (Deciduous and coniferous woodland, individual trees, scrub and hedgerows)
- Arable (all crops, including flower and fruit crops and ploughed land)

- Heath and moorland (Lowland and upland heathland, moorland and mountain; includes bracken)
- Streams and ditches (Rivers, streams, ditches, springs and canals)
- Other (If other please specify)

**What percentage of the surrounding land use (0-5 metres) is made up of trees, woodland or scrub?\***

**What percentage of the surrounding land use (0-5 metres) is made up of ponds and lakes?\***

**What percentage of the surrounding land use (0-5 metres) is made up of arable land?\***

**What percentage of the surrounding land use (0-5 metres) is made up of heath and moorland?\***

**Extent of modified bank?**

- 0%
- 1-25%
- 26-50%
- 51-75%
- 76-100%

**Is the base of the pond natural or artificial**

- Natural
- Artificial
- I don't know/can't tell

**Please time for 2 minutes and check off any wildlife you observe within this time?**

- Tadpoles
- Adult amphibians
- Fishes
- Heron
- Dragonfly or damselfly
- Waterfowl
- None
- Other (please specify)

**Wildlife photo 1&2**

**Is the pond under the care of a community group or other organization?**

- Yes
- No
- Unknown

**If yes, what is the name of the organization?**

- 

**Water quality result (Nitrate)**

- < 0.2
- 0.2 - 0.5
- 0.5 - 1
- 1 - 2
- 2 - 5
- 5 - 10
- 10+

**Water quality result (Phosphate)**

- < 0.02
- 0.02 - 0.05
- 0.05 - 0.1
- 0.1 - 0.2
- 0.2 - 0.5
- 0.5 - 1

1+

**Additional Notes (invasive species, pollution etc)**

---



## **SUGGESTED CITATION**

ZSL (2025). The State of London's Ponds. Witcombe E., Pecorelli, J. (Eds). Regents Park, London, UK.



**Estuaries & Wetlands Conservation Programme**  
Zoological Society of London  
Regent's Park, London NW1 4RY

[marineandfreshwater@zsl.org](mailto:marineandfreshwater@zsl.org) | [zsl.org/eels](https://zsl.org/eels)

ZSL is a charity registered in England and Wales no: 208728